

# KSM Briefing

## AWCBC

### Online Data Community



## Synopsis

The AWCBC Online Data Community (AOC) is a web portal that provides a forum for members to enhance coding consistency, submit jurisdictional data and extract data for the purpose of comparison and analysis. The site resides at [aoc.awcbc.org](http://aoc.awcbc.org) and consists of four major areas:

- NWISP and KSM Report Extraction
- NWISP and KSM Annual Data Submissions
- Coding and Coder's Reference Manual
- Issue Management

This briefing will give a high level overview of the Key Statistical Measures (KSM) Reporting features that the site has to offer its membership.

## Overview

The extraction of Key Statistical Measures (KSMs) from the AWCBC Online Data Community (AOC) has been designed to make it as easy as possible to obtain the information you are looking for from a number of disparate perspectives in a timely manner. Whether you are looking to conduct a KSM analysis slicing data on year, jurisdiction, or KSM, the portal will accommodate your needs through an intuitive three step wizard. This document will give you a briefing of the features available from three different avenues: *KSM Extraction*, *Standard Definitions*, and *Annual Preface Report and Breakdown of Assessment Rate Data*.

## KSM Extraction

### Slicing your Data

You can slice the data in virtually any manner you'd like with the new KSM extraction wizard. Place jurisdictions, KSMs, or years on any axis of the chart and/or table. Group by KSM categories in your analysis (such as Injury Frequency, Operation Measures, Severity, etc.)

With such flexibility, through a dynamic analysis, you'll be able to answer questions in a quick and informative manner, such as:

### ❖ *How is my jurisdiction really doing versus jurisdictions of a similar size?*

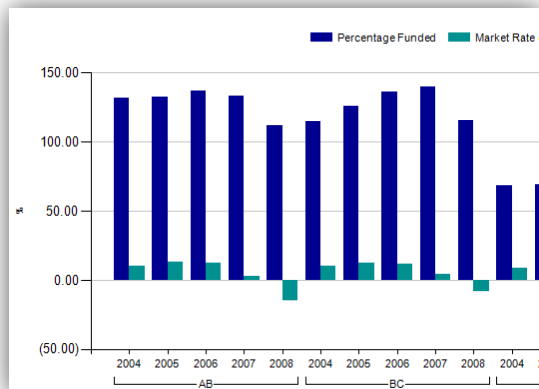
Use the extraction tool to perform a jurisdictional financial comparison using Market Rate of Return (KSM 14) and Percentage Funded (KSM 15) over a set of years.

### ❖ *What's happening to my claim size as claim frequency decreases?*

Use the extraction tool to plot injury frequency (KSM 21) behavior as a function of average benefit costs per lost-time claim (IR 5).

### ❖ *How many claims are left on benefits after a full year post-accident?*

Use the extraction tool to plot the number of new lost-time claims (KSM 2.1) versus the percentage of wage-loss claims off compensation at 360 days (KSM 25.6).



## Footnotes and Definitions

To help you better understand the data you're looking at, any footnotes that have been associated with the figures you are viewing are always coloured in such a way that when you hover over the indicated cells, the respective footnotes will appear. A similar feature will also allow you to see a brief overview of a KSM's definition should you hover over the KSM name in the chart.

BC	MB	NB	NL	NS	NT/NU	ON	PE
3408	42374	25691	14016	31753	3706	312315	4254
159	17091	4686	4239	8120	936	78256	877
251	15181	35					
908	1910	1143	334	738	18	16267	87

NB has a 3 day waiting period therefore, the number of lost time claims listed in this report may not reflect every lost time injury for this province. NB accepted 6,461 lost-time claims (including day of accident) in total in 2008.

## Standard Definitions

Beyond the ability to conduct data analysis, the site also provides the AWCBC's standard KSM definitions, listing the intent of each measure, its definition, as well as the method of calculation:

**AWCBC online community**  
KSM Reports > External KSM definitions

### External KSM Definitions

**1. Number of Claims Reported**

**Intent of Measure**  
To measure the volume of claims reported reflecting adjudicative activity.

**Definition**  
Number of new claims reported within the reference year regardless of...

**Calculation**  
Includes all lost-time, no lost-time, health care only, occupational disease...

Likewise, you can also find the very same information when it comes to definitions for Breakdown of Assessment Rates:

**AWCBC online community**  
AWCBC Online Community > Home

### KSM Breakdown Assessment Rates

**A - Compensation Costs (\$)**

**Intent of Measure:**  
To provide a comparable estimation for the cost of benefits related to...

**Definition:**  
Portion of the average rate that is deemed necessary to finance the total... in the reference year, for assessable employers.

**Calculation:**  
Each jurisdiction calculates their average assessment rates using the total... Year Benefit Costs Incurred for \$100 of Assessable Payroll (which is calculated...)

## Annual Preface Report and Breakdown of Assessment Rate Data

While annual data for both preface reports and breakdown of assessment rates can also be pulled while extracting a KSM report from the system, they can also be pulled directly on their own by selecting the year for which you'd like to see the data. The sample below shows an excerpt of 2008's KSM Preface Report:

**Preface Data Report**  
Select a submission year: 2008

1 of 1 | Select a format | Export

**PREFACE TO ACCOMPANY KEY STATISTICAL MEASURES-2008**

2008	AB	BC	MB	NB	NL	NS
% Earnings Based on	90% net	90% net	90% net	85% loss of earnings	80% net	75% net 1st 26 wks then 85% net
Waiting Period (for Waiting Period details click here)	No	No	No	3/5ths of wky benefits	No	2/5ths of wky benefits
Employer required to pay worker for day of injury	Yes	No	Yes	No	Yes	No

## Help Resources

For help on how to extract KSM data from the AOC, please see any of the following resources (all are available from the system's upper help menu):

- ❖ Training Manual (section 11)
- ❖ User Manual (sections 11-15)
- ❖ Tutorial Videos (#1 and #2)